

W/H

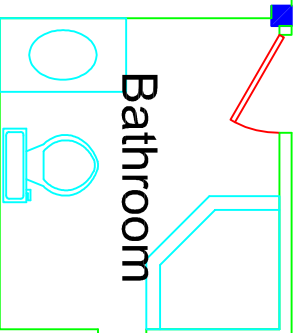
Storage

Furnace

Storage

Storage ■

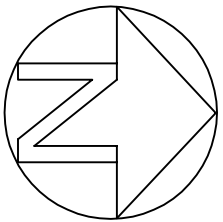
Bathroom



Basement

~963 sq. ft.

Basement Area ~ 693 sq. ft.
First Floor Area ~ 1,103 sq. ft.
Second Floor Area ~ 688 sq. ft.
Total Floor Area ~ 2,754 sq. ft.



Office or
Conference Room

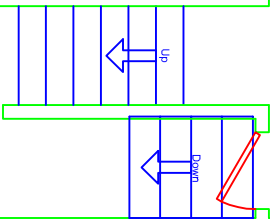
Break Room Office/Conference
Conference Room

Bathroom

Porch

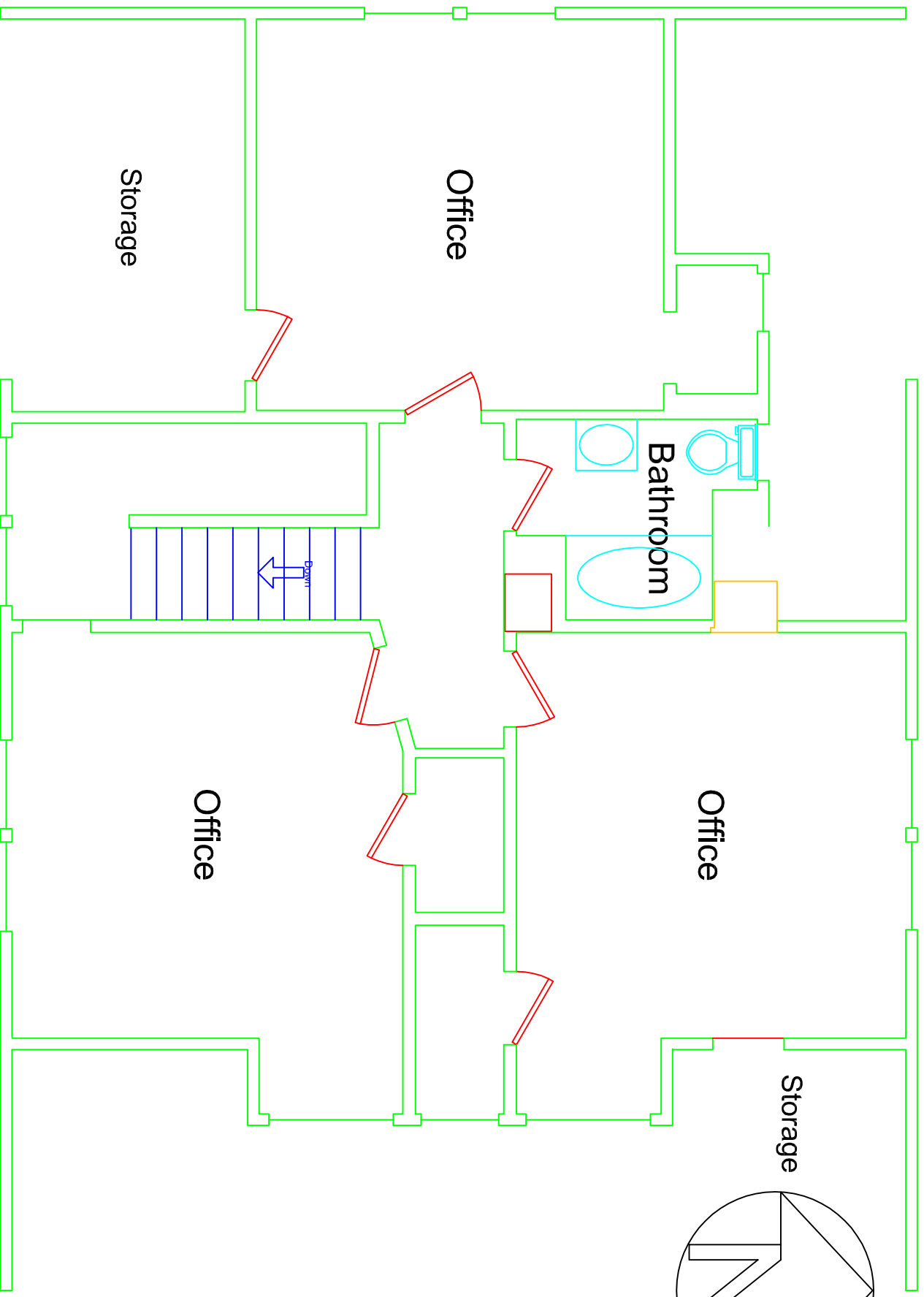
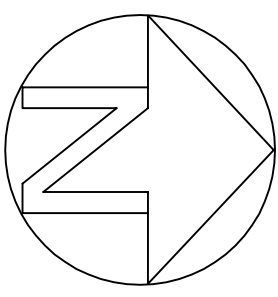
Office or
Conference Room or
Waiting Room

Office



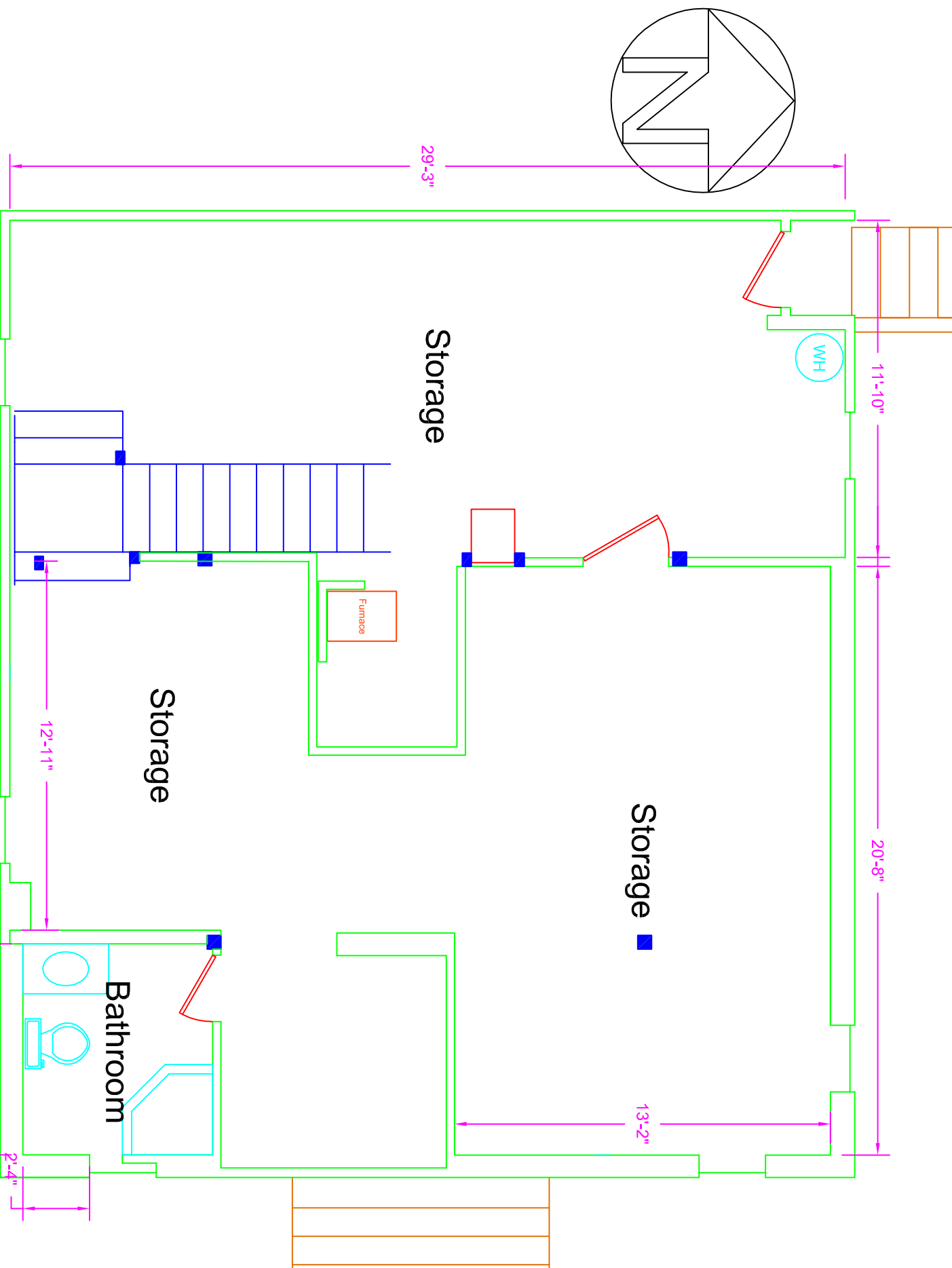
1st Floor

~1,103 sq. ft.



2nd Floor

~688 sq. ft.



Storage

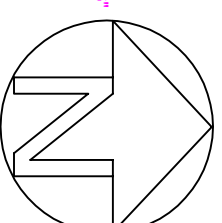
Storage

Bathroom

Basement

~963 sq. ft.

Basement Area ~ 693 sq. ft.
First Floor Area ~ 1,103 sq. ft.
Second Floor Area ~ 688 sq. ft.
Total Floor Area ~ 2,754 sq. ft.



*Dimensions
are
approximate

Office or
Conference Room

11'-2"

9'-6"

Break Room

Office/Conference

Office or
Conference Room

13'-4"

11'-2"

7'-8"

11'-7"

Bathroom

Office

Office or
Conference Room or
Waiting Room

Up
Down

Porch

15'-6"

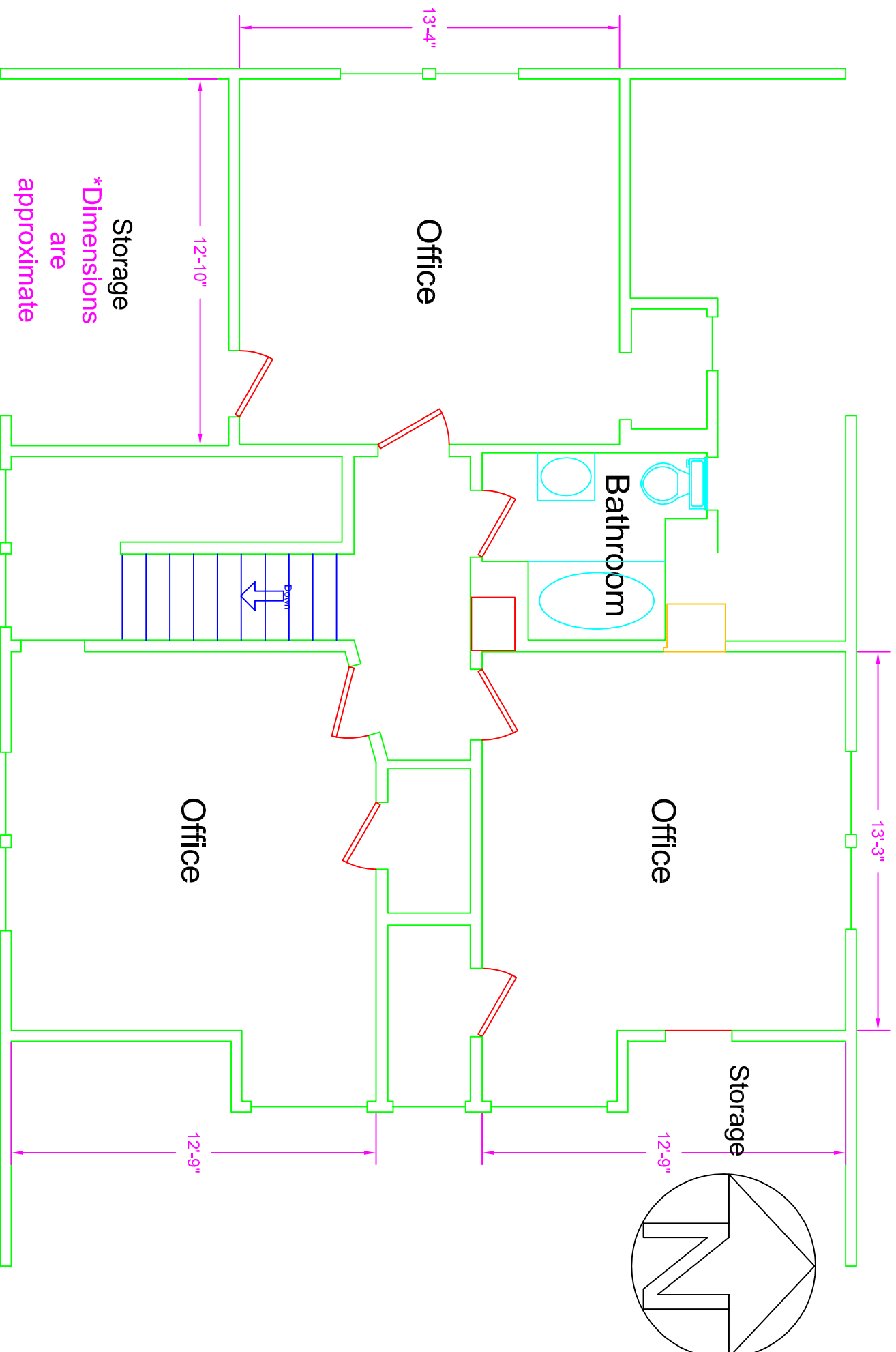
13'-3"

11'-6"

12'-10"

1st Floor

~1,103 sq. ft.



Storage
*Dimensions
are
approximate

Office

Bathroom

Office

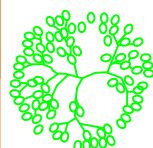
Storage

Office

2nd Floor

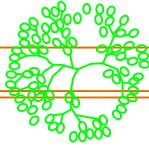
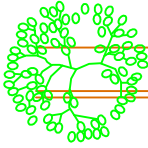
~688 sq. ft.

WASHINGTON STREET



SIDEWALK

COMMERCIAL STREET



12' Alley

50'

150'

PROPERTY LINE

Porch



PROPERTY & PROJECT OVERVIEW

1705 Commercial Street SE
Existing Lot Layout

WASHINGTON STREET

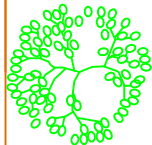
3'-6" 22' 3'-6"

LOCATE CURB OUTFALL TO ALLOW
REGID SLOPE
TOP OF CURB SPOT ELEV. ~ XX'
INVERT ELEV. FOR DRAIN PIPE ~ XX'

BENCHMARK
ELEV. 239.127

(E)STORM
DRAIN

Widen & Repour Concrete Apron to 22'
SEE ATTACHED STANDARD NO. 302



12' Alley

10x10' VISION CLEARANCE TRIANGLE

EXTRUDED CURBING

STANDARD 9' x 19'

STANDARD 9' x 19'

Pour concrete pad between parking area and house

PROPERTY LINE

COMMERCIAL STREET

PROPERTY & PROJECT OVERVIEW

1705 Commercial Street SE
Parking Space Layout



1705 Commercial Street SE
Plat Map
Block 4, Lot 1, Taxlot 9700
50' x 150'

